



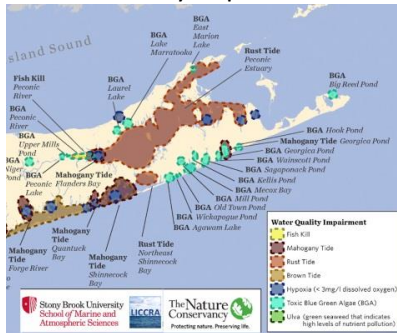
PECONIC GREEN GROWTH

MATTITUCK Fact Sheet

Water sustains life and symbolizes purity. But water quality is degrading. Our ground and surface waters need protection. The aquifers are not only sources of drinking water, but flow horizontally to surface waters, impacting the marine health of our bays. Excess nitrogen compounds are a critical cause of algal blooms, which lower oxygen levels, create toxins, and ultimately cause fish kills. Contaminants of emerging concern, such as pharmaceuticals and personal care products, need to be treated before being released to ground and surface waters. Poor water quality will ultimately impact community character and vitality, which are especially relevant for our coastal and tourist economies.

The following is a snapshot of local issues that impact excess nitrogen loading. More detailed maps are available at <http://peconicgreengrowth.org/community-maps-2014/> where you can find the areas needing priority action, as well as identify conditions relevant to your home. Visit our website to learn about options for upgrading your wastewater system to help protect your environment.

LI Water Quality Impairments 2016



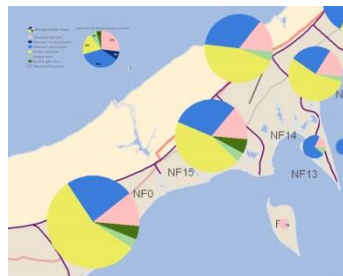
EXCESS NITROGEN (N) LOADING

- Excess nitrogen compounds can be harmful to human health.
- Our surface waters are 20 times more susceptible to N loads than maximum contaminant levels for drinking water.
- Excess N feeds algal blooms, which in turn create toxins. These impact fish and shellfish formation and survival rates.
- Excess nitrogen contributes to declines in eel grass and wetland grass beds. Their loss impacts marine habitats and reduces their usefulness as property buffers in storms.
- The algal blooms are becoming more numerous and more potent.

SOURCES OF EXCESS NITROGEN

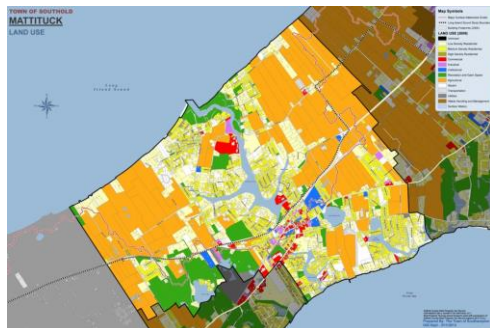
The subwatershed that approximates the area of Mattituck in the Peconic Estuary is responsible for 5 % of all the nitrogen loading in the Peconic Estuary (of 43 subwatersheds). Sources are estimated as coming from:

- 40% agriculture
- 36% septic/cesspool systems
- 14% atmospheric deposition
- 6% fertilizer from golf courses
- 4% fertilizer from lawns



Courtesy TNC and Prof. Christopher Gobler

Land Use



MATTITUCK WATER QUALITY

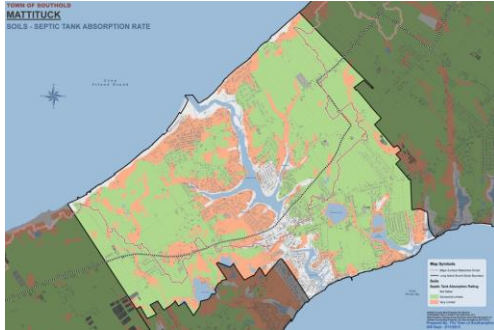
- Total nitrogen levels are critical and worsening.
- Mattituck Creek experiences repeated bouts of hypoxia.
- Mattituck Creek in 2012 and James Creek in 2015 experienced paralytic shellfish poisoning.
- Deep Hole and James Creeks have TMDL's for pathogens and are seasonally certified for shellfishing.
- Mattituck Pond is listed as impaired due to low dissolved oxygen, phosphorus and pathogens. It repeatedly experiences blue/green algae, which is harmful to pets and humans.
- Rust Tide (algae) repeatedly occurs off of Cutchogue in the Peconic Estuary.



PECONIC GREEN GROWTH

MATTITUCK Fact Sheet

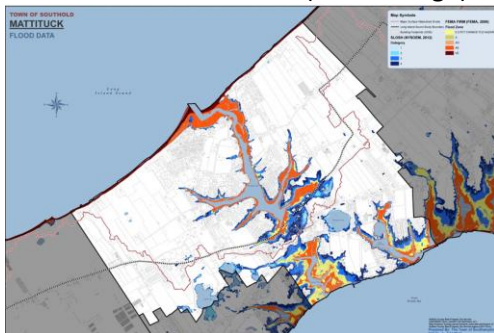
Soils Suitable for Septic Treatment



CESSPOOLS VS. SEPTIC SYSTEMS

CESSPOOLS, which are often found on properties developed before 1973, dispense all wastewater with no treatment directly to the ground. Dissolved solids, contaminants and pathogens can percolate to groundwater. The current code requires SEPTIC SYSTEMS, which places an enclosed tank before the leaching pits (which resembles a cesspool) or field. In the tank, fats rise and solids settle to the bottom, where microbes treat the solids. Clarified effluent is dispensed, with 10% of nitrogen mitigated. New, enhanced systems can lower nitrogen levels by 50 – 90%. 23% of buildings in Mattituck are on soils considered unsuitable for onsite septic treatment, as most soils drain too quickly.

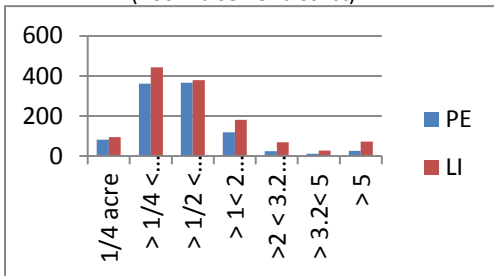
Flood and SLOSH Zones (Storm Surge)



DEPTH TO GROUNDWATER and FLOOD/SLOSH ZONES

The Suffolk County Sanitation Code (SCSC) requires a 3-foot separation distance from the bottom of wastewater systems to groundwater to allow for natural treatment and filtering of effluent. When groundwater is less than 7 feet below grade, there can be difficulties siting the system. Where depths to groundwater are less than 13 feet, systems are likely to become noncompliant as groundwater elevations rise due to climate change. In Mattituck 1,157 buildings (38%) have depths to groundwater of less than 13 feet. 923 (30%) are in a SLOSH (storm surge) zone.

Mattituck # Developed Lots by Size (not in a sewer district)



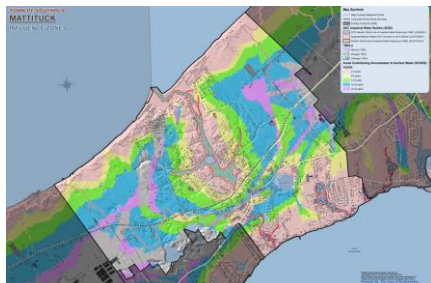
SMALL LOT SIZES

In Mattituck **35%** (349) of the developed lots in the PE and **33%** (418) in the LI Sound watershed are **nonconforming** to the 20,000 SF (nominal half-acre) minimum lot sizes SCDHS requires to dilute wastewater to acceptable contamination levels for drinking water. If a community relies on individual wells, this minimum lot size is even larger – a nominal one acre. The contaminant concentrations discharged from these systems are higher than code. These small parcels become priorities for upgrades. Most hug the coastline on the creeks.

By 2080 we estimate that 115 buildings in Mattituck will be inundated.

CLIMATE CHANGE

By 2080 an estimated 616 buildings in Mattituck will most likely have their wastewater treatment systems compromised due to inadequate horizontal distances to surface waters.



INFLUENCE ZONES

Denoting the Time it Takes Groundwater to Reach Surface Waters
 923 or **30%** of the buildings in Mattituck in the Peconic Estuary
 637 or **37%** of the buildings in Mattituck in the LI Sound watershed are in the “Pink Zone,” where it only takes 0-2 years for groundwater and contaminants to reach surface waters. It makes sense to prioritize improvements in the “pink” zone, as the beneficial impacts will be felt more quickly.