



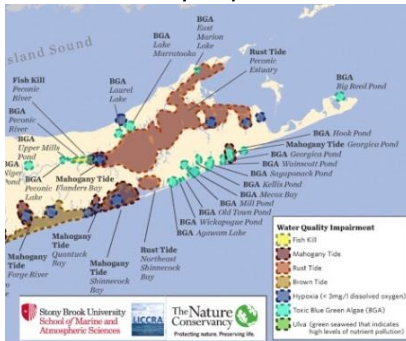
PECONIC GREEN GROWTH

WADING RIVER Fact Sheet

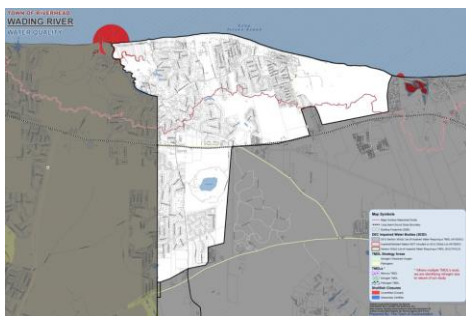
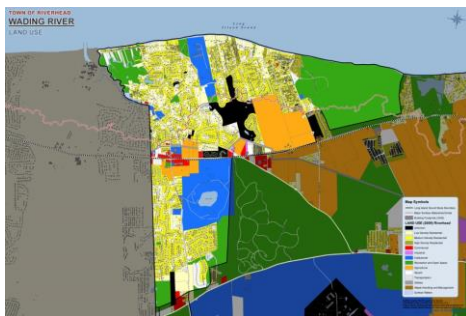
Water sustains life and symbolizes purity. But water quality is degrading. Our ground and surface waters need protection. The aquifers are not only sources of drinking water, but flow horizontally to surface waters, impacting the marine health of our bays. Excess nitrogen compounds are a critical cause of algal blooms, which lower oxygen levels, create toxins, and ultimately cause fish kills. Contaminants of emerging concern, such as pharmaceuticals and personal care products, need to be treated before being released to ground and surface waters. Poor water quality will ultimately impact community character and vitality, which are especially relevant for our coastal and tourist economies.

The following is a snapshot of local issues that impact excess nitrogen loading. More detailed maps are available at <http://peconicgreengrowth.org/community-maps-2014/> where you can find the areas needing priority action, as well as identify conditions relevant to your home. Visit our website to learn about options for upgrading your wastewater system to help protect your environment.

LI Water Quality Impairments 2016



Land Use



EXCESS NITROGEN (N) LOADING

- Excess nitrogen compounds can be harmful to human health.
- Our surface waters are 20 times more susceptible to N loads than maximum contaminant levels for drinking water.
- Excess N feeds algal blooms, which in turn create toxins. These impact fish and shellfish formation and survival rates.
- Excess nitrogen contributes to declines in eel grass and wetland grass beds. Their loss impacts marine habitats and reduces their usefulness as property buffers in storms.
- The algal blooms are becoming more numerous and more potent.

SOURCES OF EXCESS NITROGEN

Wading River is sandwiched by two parks, but has mostly mid and high density housing. Some farming and institutional uses also contribute nitrogen. Due to both site conditions and densities, the intensity of nitrogen loading is

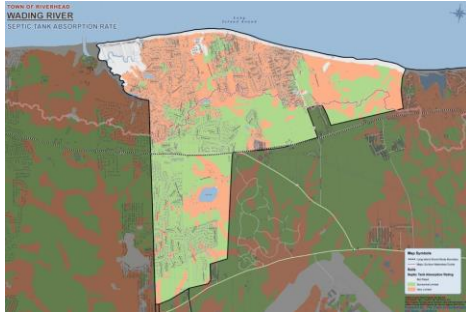
WADING RIVER WATER QUALITY

- Wading River in the Long Island Sound watershed is closed to shellfishing.
- The Long Island Sound is listed as impaired in this section.
- Wildwood State Park is to install a nitrogen-reducing wastewater treatment in response to a law suit for failing to have a NPDES permit. The park was using large-capacity cesspools which were banned by the U.S. EPA.

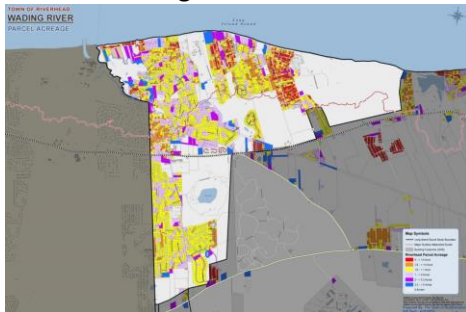


PECONIC GREEN GROWTH

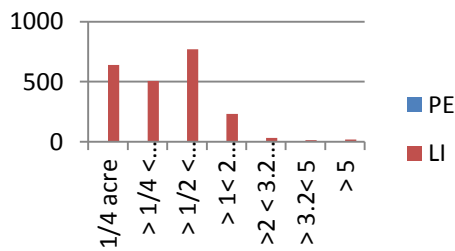
Soils Suitable for Septic Treatment



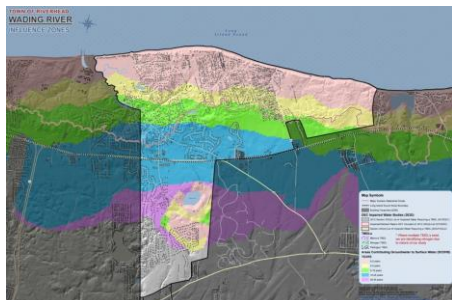
Wading River: Lot Sizes



Wading River # Developed Lots by Size (not in a sewer district, LI Sound Watershed)



By 2080 we estimate that 14 buildings in Wading River will be inundated.



WADING RIVER Fact Sheet

CESSPOOLS VS. SEPTIC SYSTEMS

CESSPOOLS, which are often found on properties developed before 1973, dispense all wastewater with no treatment directly to the ground. Dissolved solids, contaminants and pathogens can percolate to groundwater. The current code requires SEPTIC SYSTEMS, which places an enclosed tank before the leaching pits (which resembles a cesspool) or field. In the tank, fats rise and solids settle to the bottom, where microbes treat the solids. Clarified effluent is dispensed, with 10% of nitrogen mitigated. New, enhanced systems can lower nitrogen levels by 50 – 90%. 72% of buildings (1,968) in Wading River (LIS watershed) are on soils considered unsuitable for onsite septic treatment.

DEPTH TO GROUNDWATER and FLOOD/SLOSH ZONES

The Suffolk County Sanitation Code (SCSC) requires a 3-foot separation distance from the bottom of wastewater systems to groundwater to allow for natural treatment and filtering of effluent. When groundwater is less than 7 feet below grade, there can be difficulties siting the system. Where depths to groundwater are less than 13 feet, systems are likely to become noncompliant as groundwater elevations rise due to climate change. In Wading River in the LI Sound watershed only 116 buildings (4%) have shallow depths to groundwater. Less (87) are in SLOSH zones. These are located close to Wading River.

SMALL LOT SIZES

In Wading River **47%** (1,039) of the developed lots in the LI Sound watershed are **nonconforming** to the 20,000 SF (nominal half-acre) minimum lot sizes SCDHS requires to dilute wastewater to acceptable contamination levels for drinking water. If a community relies on individual wells, this minimum lot size is even larger – a nominal one acre. The contaminant concentrations discharged from these systems are higher than code. Small parcels become priorities for upgrades. There are 817 lots in the LIS watershed (32%) sized ¼ acre or less.

CLIMATE CHANGE

By 2080 an estimated 80 buildings in Wading River will most likely have their wastewater treatment systems compromised due to inadequate horizontal distances to surface waters.

INFLUENCE ZONES

Denoting the Time it Takes Groundwater to Reach Surface Waters

1,240 or **45%** of the buildings in Wading River are in the “Pink Zone,” where it only takes 0-2 years for groundwater and contaminants to reach surface waters. It makes sense to prioritize improvements in the “pink” zone, as the beneficial impacts will be felt more quickly.